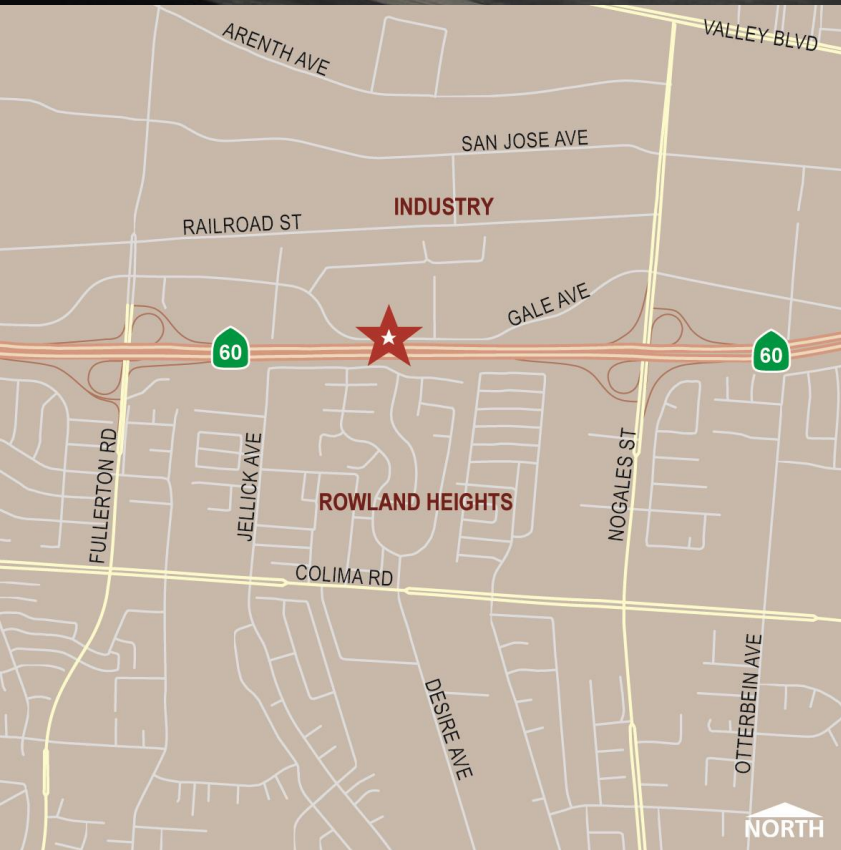


Lease Opportunity

THE CONCOURSE *City of Industry*



Availabilities Include:

18605 E. GALE AVE. (Bldg. 155)		
SUITE	RENTABLE SF	RATE
168	3,985	\$1.40 NNN
230	2,652	\$2.30 FSG

18645 E. GALE AVE. (Bldg. 156)		
SUITE	RENTABLE SF	RATE
Fully Leased		

For leasing information,
please contact:
RON HEIM | 909.942.4656
Executive Director
ron.heim@cushwake.com
Lic. # 00830662

SEAN KERN | 909.942.4691
Director
sean.kern@cushwake.com
Lic. #01377294



Lease Opportunity

THE CONCOURSE *City of Industry*



FEATURES & AMENITIES INCLUDE:

- Excellent freeway identity & signage
- Easy access to the 60, 57 and 605 Freeways
- Adjacent to regional mall, shopping centers, restaurants & commercial office developments
- Central conference room facility available for tenant use
- Free surface parking
- Professionally owned & managed

For leasing information,
please contact:

RON HEIM | 909.942.4656
Executive Director
ron.heim@cushwake.com
Lic. # 00830662

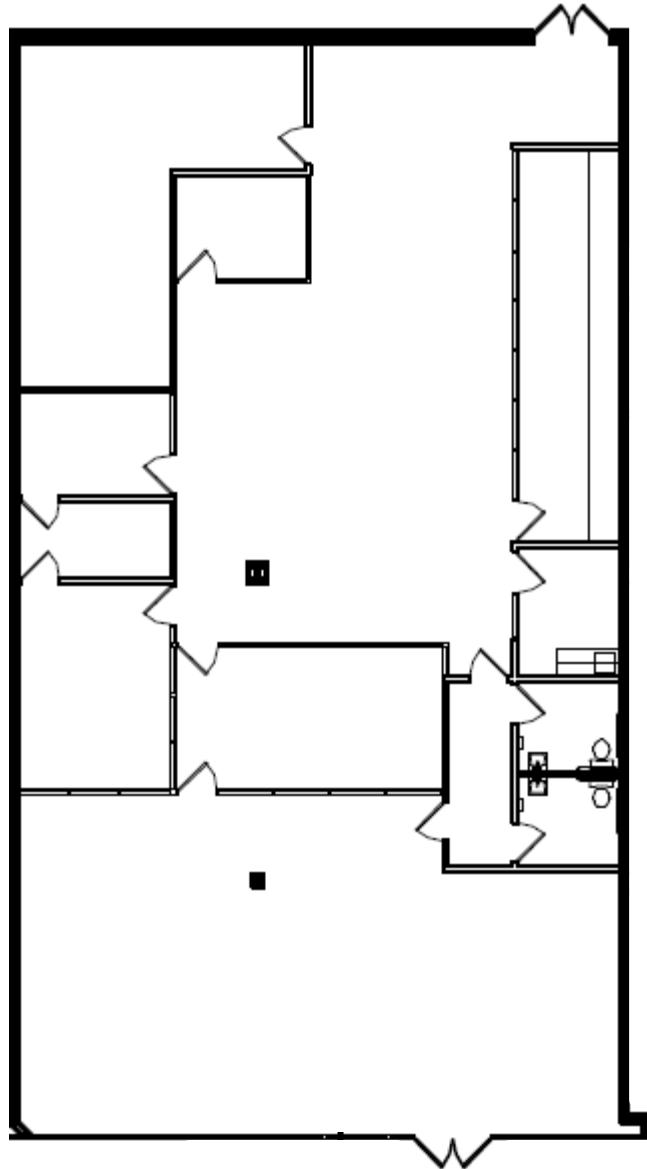
SEAN KERN | 909.942.4691
Director
sean.kern@cushwake.com
Lic. #01377294

Cushman & Wakefield of CA, Inc.
21680 Gateway Center Dr., Suite 310
Diamond Bar, CA 91765
Lic. # 00616335

Lease Opportunity

THE CONCOURSE *City of Industry*

18605 E. GALE AVE. (Bldg. 155) | Suite 168 | 3,985 RSF | \$1.40 NNN



For leasing information,
please contact:

RON HEIM | 909.942.4656
Executive Director
ron.heim@cushwake.com
Lic. # 00830662

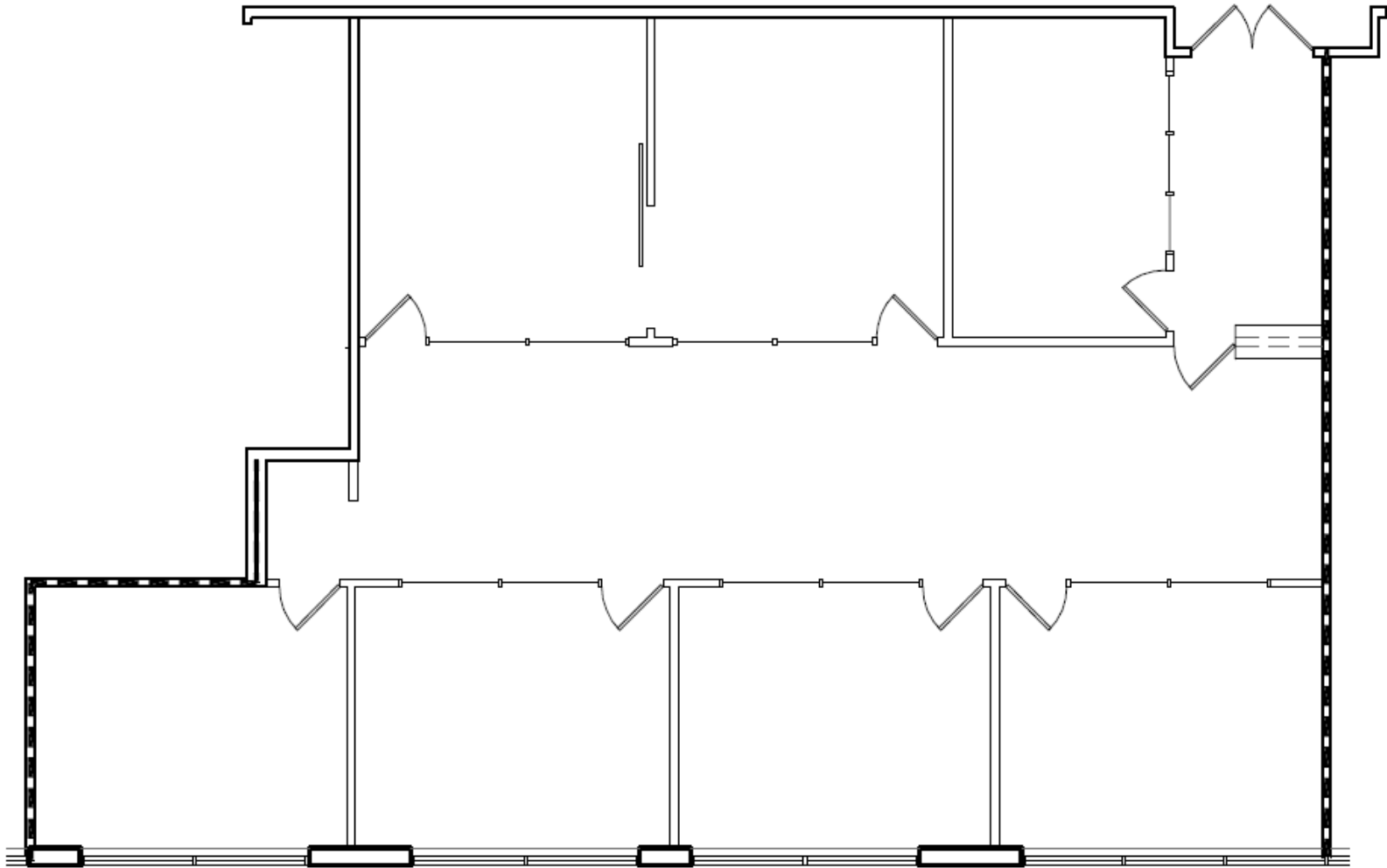
SEAN KERN | 909.942.4691
Director
sean.kern@cushwake.com
Lic. #01377294

Cushman & Wakefield of CA, Inc.
21680 Gateway Center Dr., Suite 310
Diamond Bar, CA 91765
Lic.. # 00616335

Lease Opportunity

THE CONCOURSE *City of Industry*

18605 E. GALE AVE. (Bldg. 155) | Suite 230 | 2,652 RSF | \$2.30 FSG



For leasing information,
please contact:

RON HEIM | 909.942.4656
Executive Director
ron.heim@cushwake.com
Lic. # 00830662

SEAN KERN | 909.942.4691
Director
sean.kern@cushwake.com
Lic. #01377294

Cushman & Wakefield of CA, Inc.
21680 Gateway Center Dr., Suite 310
Diamond Bar, CA 91765
Lic. # 00616335